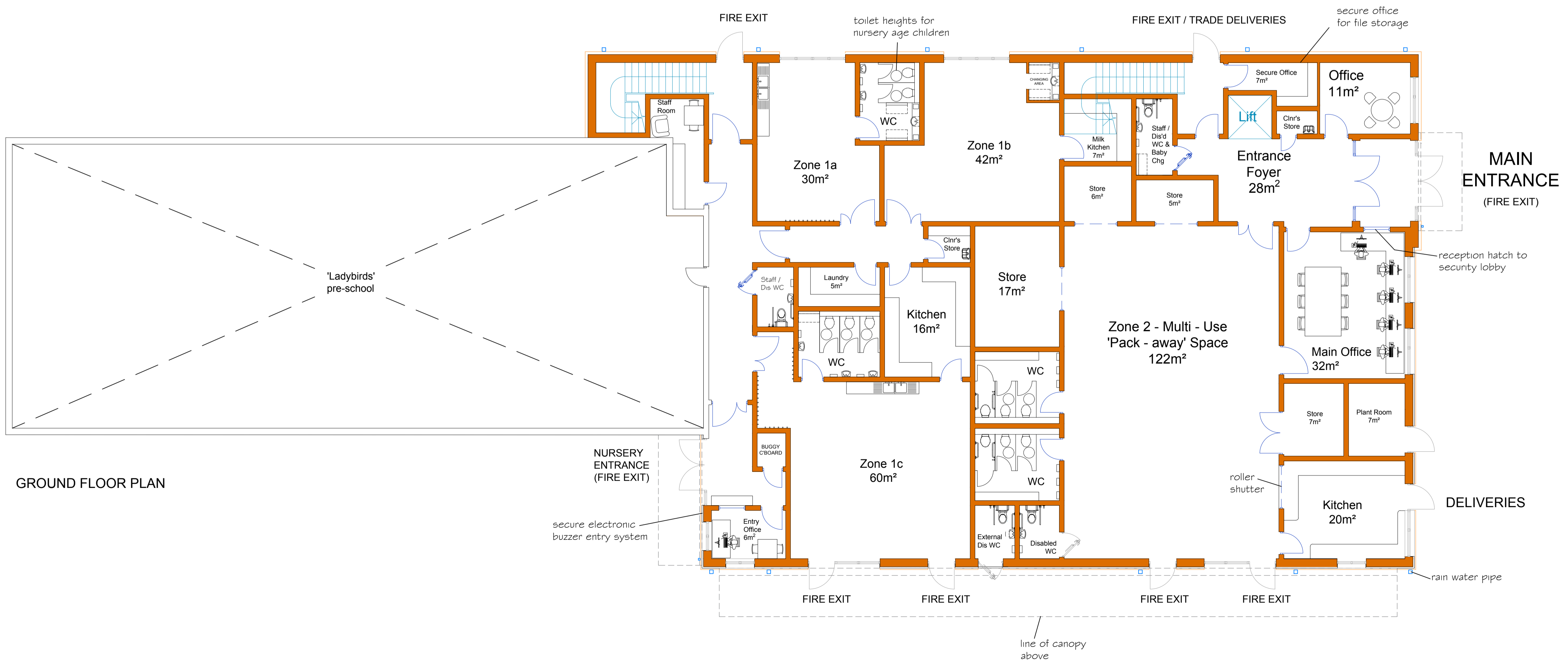
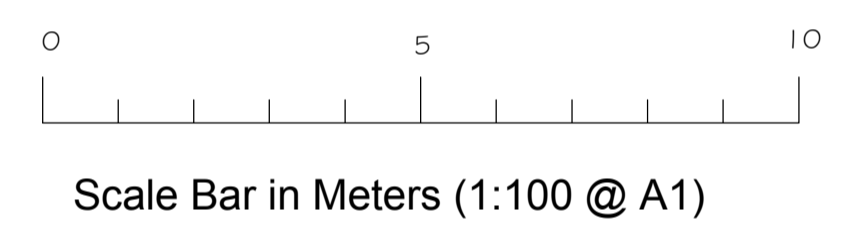
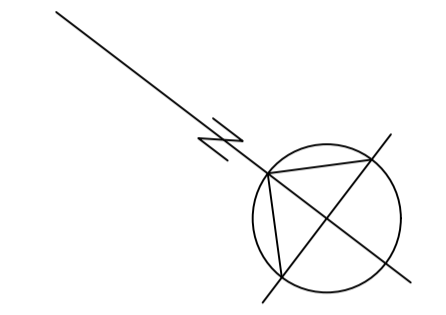


FIRST FLOOR PLAN

NOTES:  
 1. 140 Liter wheele bins under bar and in bar store to hold bottles and cartons for removing to external trade-size recycle bins.



GROUND FLOOR PLAN

# PLANNING

Rev A. Changes after feedback from planning. GB. 20.10.16

NEW VILLAGE HALL AND CAR PARK EXPANSION at COTTENHAM RECREATION GROUND, CB24 8TA

COTTENHAM PARISH COUNCIL

FLOOR PLANS AS PROPOSED

OCTOBER 2016 MY  
 1:100 @ A1 TV  
 3202/SD08 A