

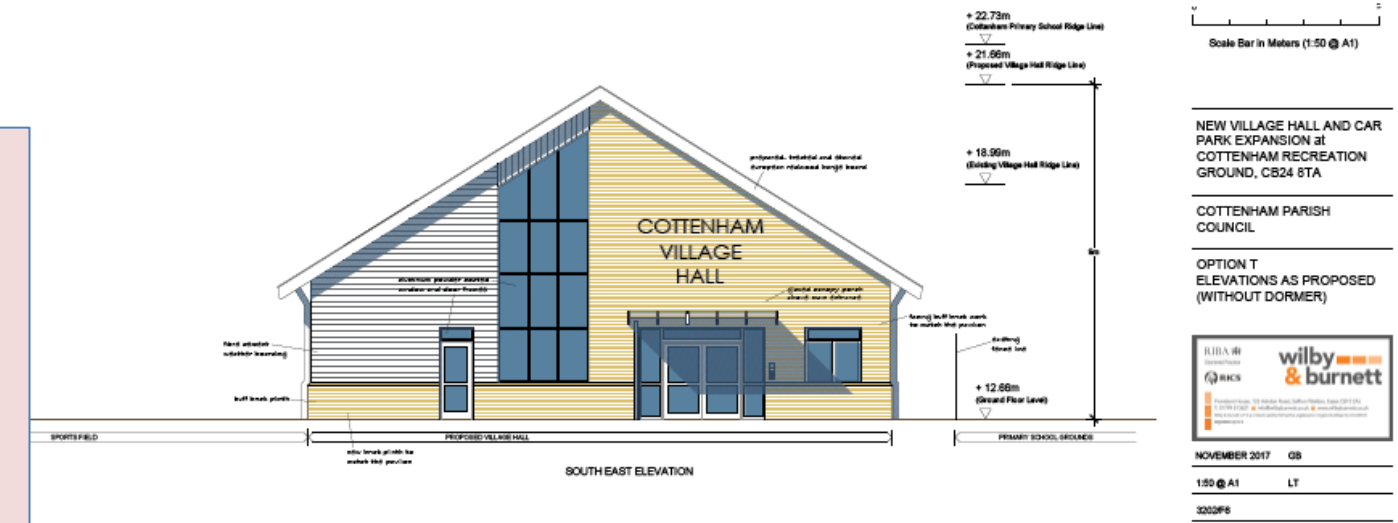
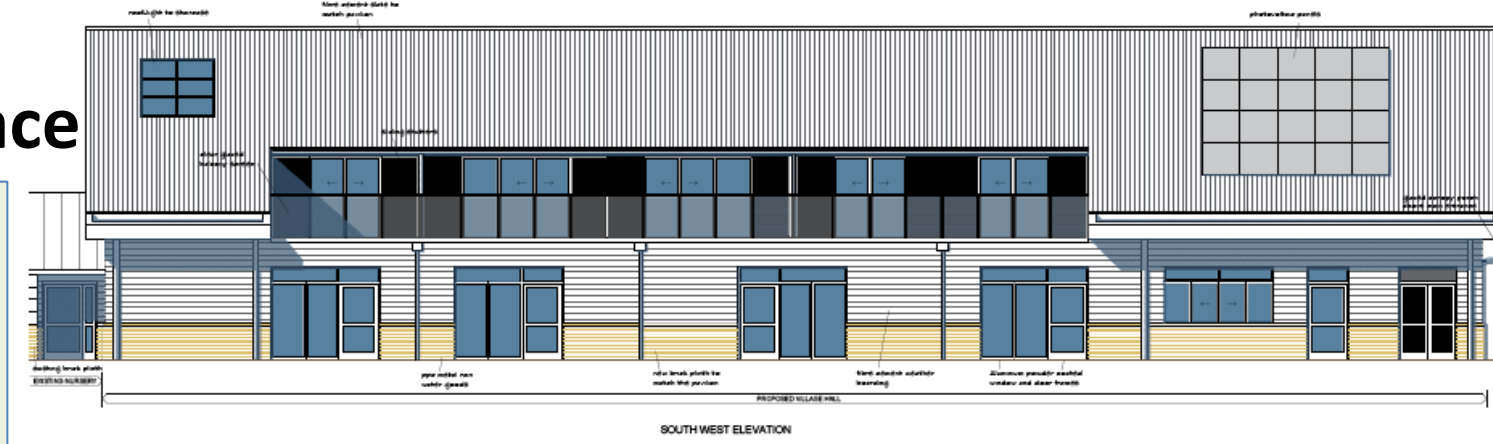
New Village Hall

Approx 530m² gross internal space

Design (and Nursery location) subject to change

Key dates:

- Earliest planning permission Apr '18
- Earliest demolition Jul '18
- Earliest re-open May '19



Expected cost:

Car Park & Road improvements	£100K
Temporary accommodation	£80K
Professional and management fees	£250K
Construction	£1900K
Final fit	£50K
Total	around £2380K*

- Separate Nursery should still be fundable within the "£1/wk" supplementary precept due to s.106 developer funding
- Subject to planning permission, building costs and interest rates at tender time.

Upper floor : multi-purpose event / club space (suggested usage)

• Area	Space	Weekday	Weekend / Social time
• LHS	31m ²	Council Office	Meeting Room
• Middle	65m ²	Business area	PC/Community Meeting Area
• RHS	65m ²	Business area	Social Club

- NB Middle and RHS linkable to create a 130m² function space with bar and kitchen

Ground floor: Two (linkable) Halls, plus kitchens, reception, stores, toilets

Reception spaces

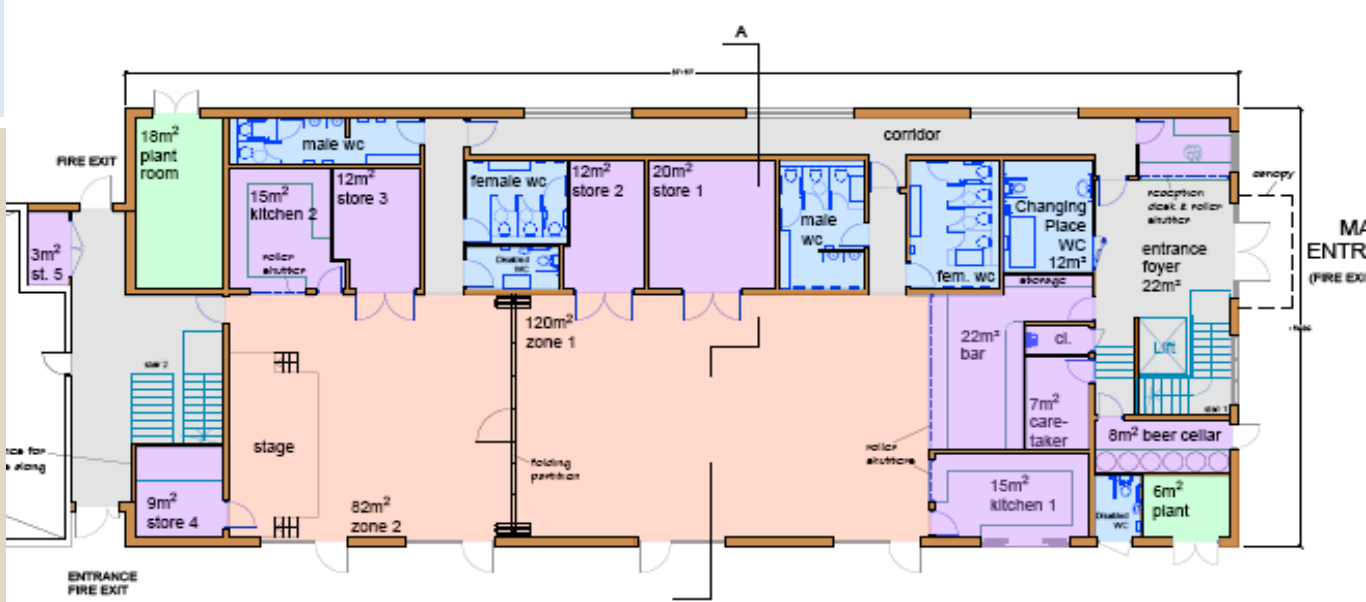
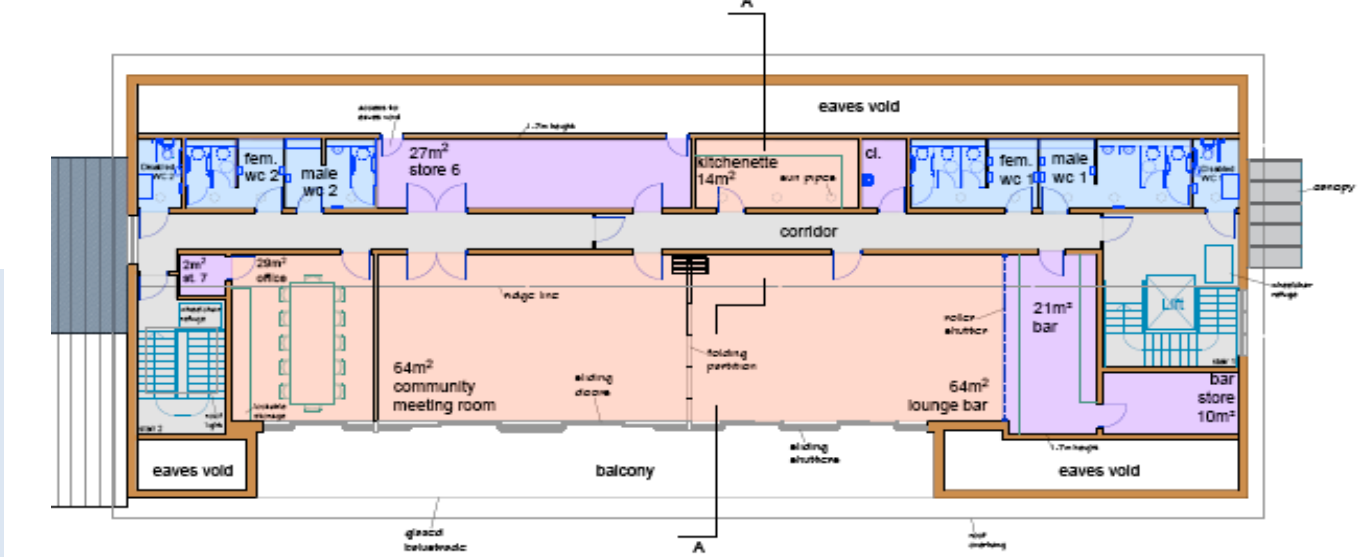
- Welcome desk, "changing place", lift, stairs

Zone 1

- 120 m² Main Hall /Bar (similar to today with better storage and toilets)

Zone 2

- 82 m² Second Hall + stage (linkable with separate kitchen store and toilets)



Scale Bar in Meters (1:50 @ A1)

NEW VILLAGE HALL AND CAR PARK EXPANSION AT COTTENHAM RECREATION GROUND, CB24 8TA

COTTENHAM PARISH COUNCIL

OPTION T ELEVATIONS AS PROPOSED (WITHOUT DORMER)

NOVEMBER 2017 GB

1:50 @ A1 LT

3202P6