

New Village Hall & Nursery

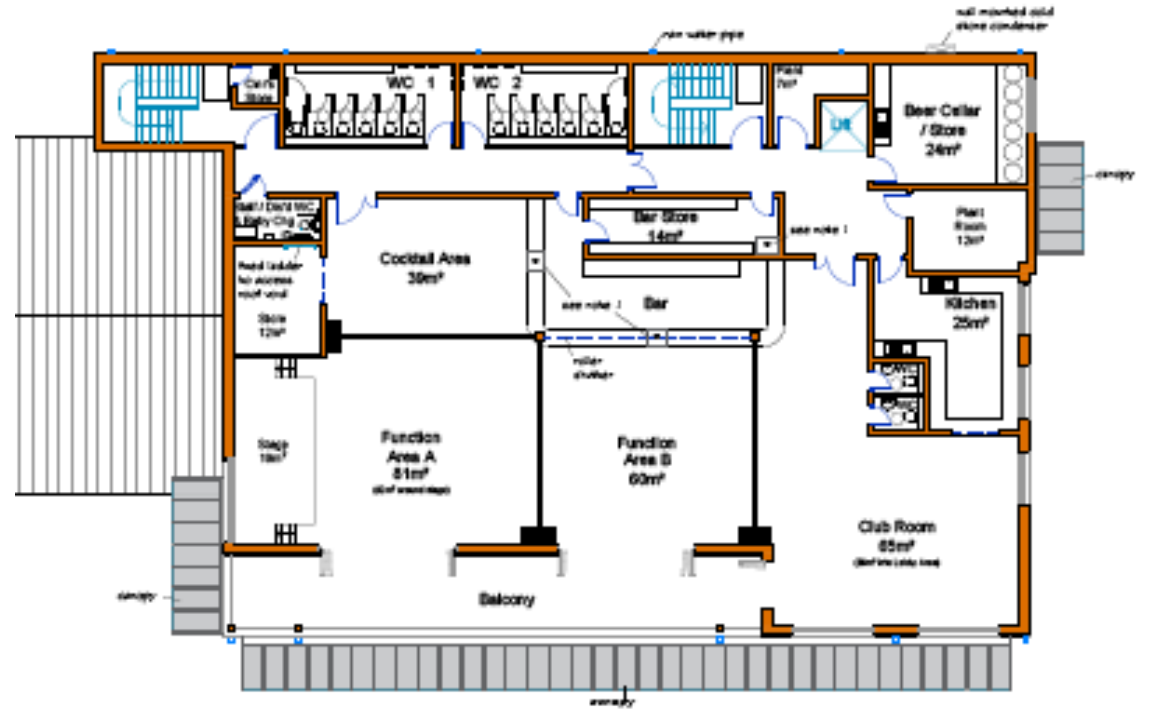
Key dates:

- Earliest planning permission Jan 2017
- Earliest demolition Jul 2017
- Earliest re-open Jul 2018



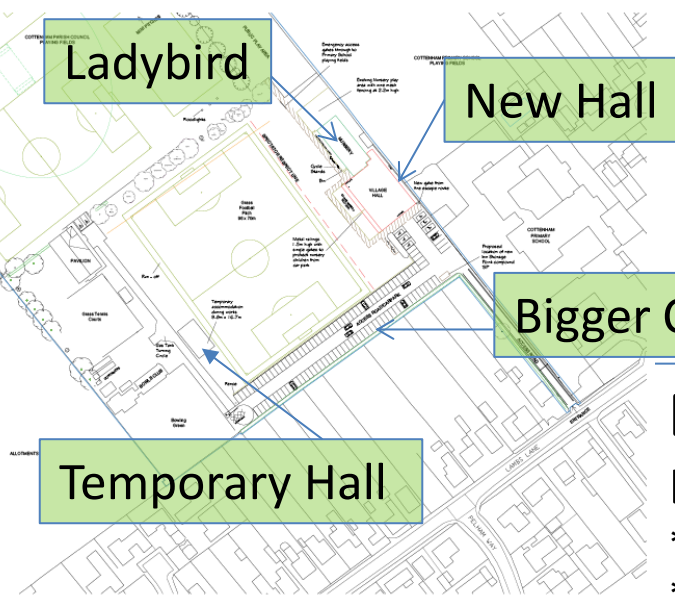
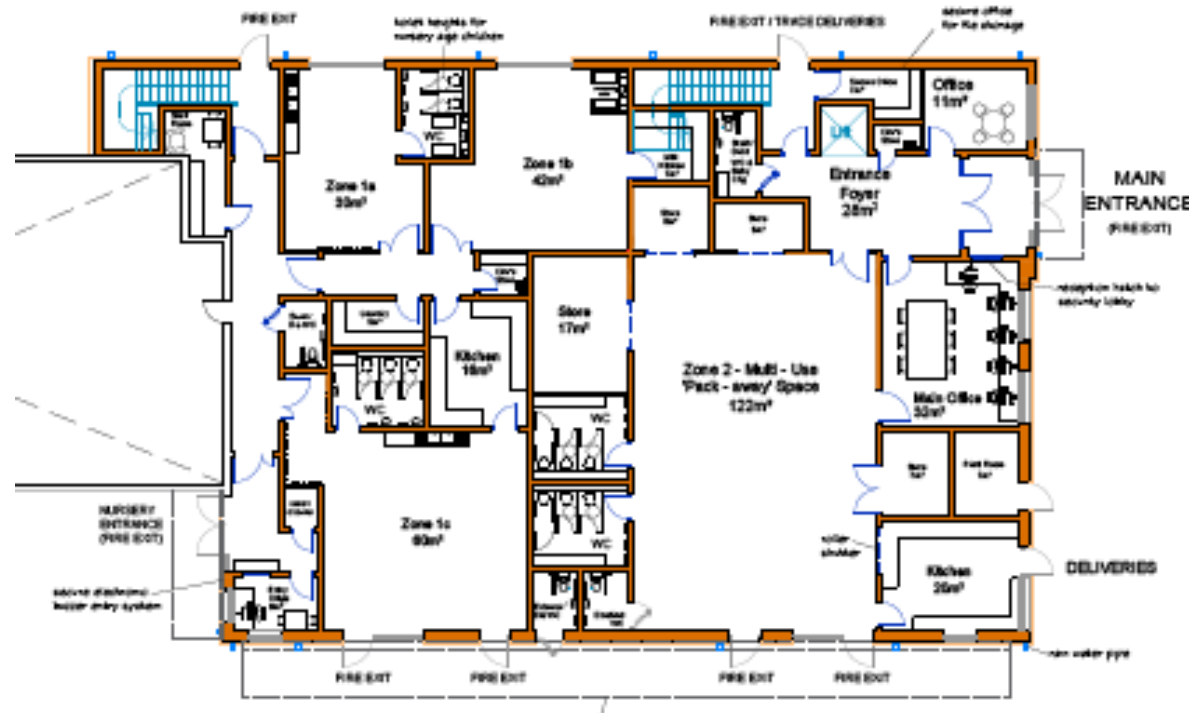
Upper floor Event / Club space

- Cocktail Area / Business café
- - 39m² extendable
- to 226m² (approx. 2x today's Hall)
- Members' Club
- - 65m² extendable
- to 226m² (approx. 2x today's Hall)



Ground floor Hall & Nursery & Offices

- Zone 1
 - year-round all-day
 - nursery/creche for
 - up to 50 0-5 year olds
- Zone 2
 - Main Hall
 - kitchen, storage and toilets
 - Parish Council office
 - "drop-in" biz space



Expected cost: around £2,500,000

Less than £1/week /home* if financed from village precept

* Estimated cost for a Band D home if £2.5 million borrowed over 25 years

* Band G will be less than £1.65/wk; Band A less than £0.65/wk