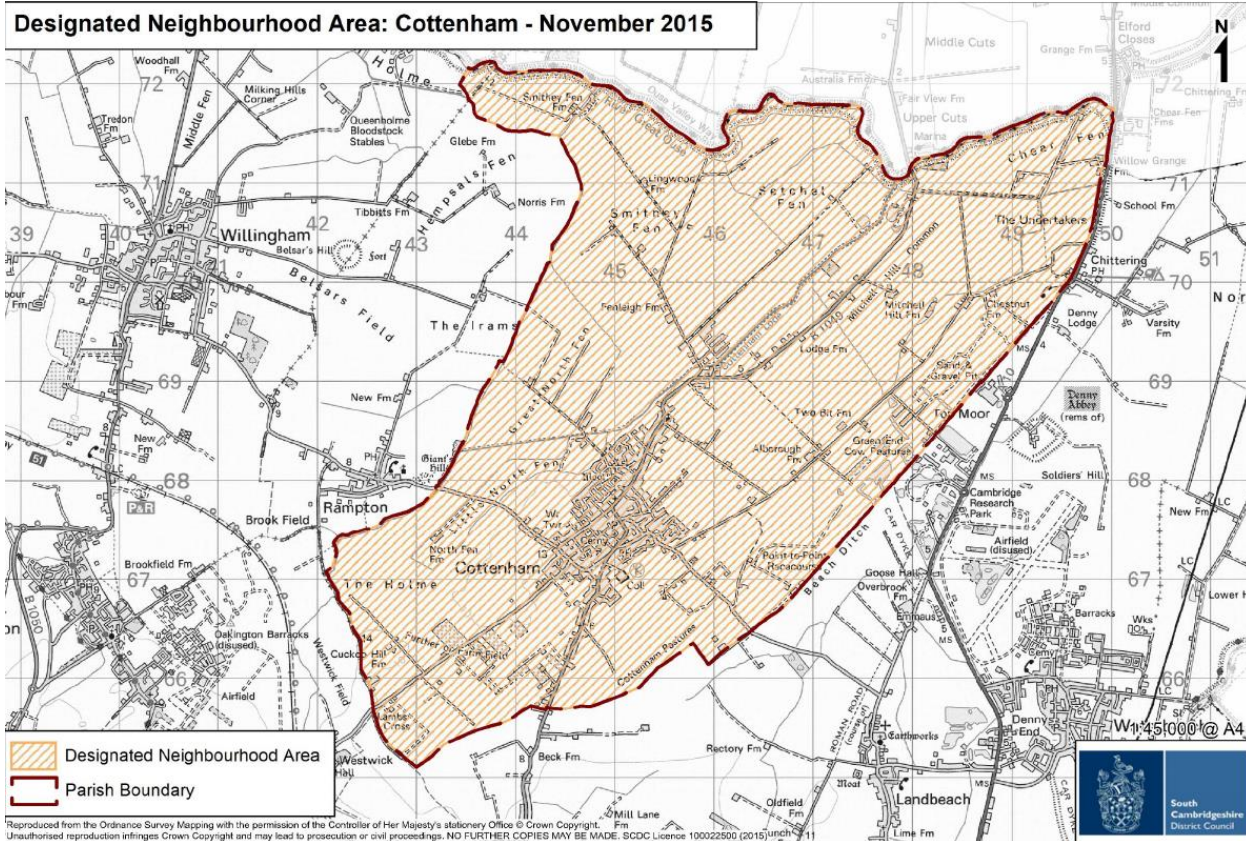


Cottenham Civil Parish

Neighbourhood Development Plan

2017 to 2031

Designated Neighbourhood Area: Cottenham - November 2015



Cottenham Parish Council

NP Evidence E13 – Traffic & Transport

December 2018

In 2031 Cottenham will still be an attractive safe rural village, proud of its character and retaining its sense of community with improved amenities and facilities, reduced impact of traffic, especially in the centre of the village, and having more affordable housing for the next generation of residents.



Cottenham Neighbourhood Development Plan Submission Plan – NP Evidence Paper E13



1 Summary

- 1.1 Although not development within scope of a Neighbourhood Plan, the NP survey uncovered a number of traffic and transport issues to be addressed in the coming years.



Cottenham Neighbourhood Development Plan
Submission Plan – NP Evidence Paper E13



Contents

1 Summary 2

2 Traffic & Transport Strategy – key themes 4

 3 Changing the character and speed of traffic throughout the village..... 5

 4 Improving pedestrian safety 6

 5 Improving public transport links, especially with Cambridge..... 7

 6 Improving cycle links 8

 7 Improving our road infrastructure 9

Appendix A: General References..... 10

2 Traffic & Transport Strategy – key themes

2.1 Five key themes, each with one or more activities, are being used as the basis of a Traffic & Transport Strategy for the next decade:

a) Changing the character and speed of traffic throughout the village

TS/1	Encourage safer entry to and departure from the village by introducing calming measures on each arterial approach road.
------	---

TS/2	Improve the speed resistance of the traffic-calming measures along the arterial roads and the High Street, especially in the village centre.
------	--

b) Improving pedestrian safety

TP/1	Introduce a medium-term pavement improvement project throughout the village centre.
------	---

TP/2	Introduce a long-term pavement improvement project to improve connection with the village core: a) from Brenda Gautrey Way, Coolidge Gardens, Lambs Lane and Stevens Close, and b) within 800 metres of the centre along all five arterial roads
------	--

TP/3	Introduce additional or improved pedestrian crossings, no further apart than 400 metres, and 200 metres within the village core.
------	--

a. Improving public transport links, especially with Cambridge

TT/1a	Encourage Stagecoach services to avoid unclassified roads in the village and extend the service beyond Lambs Lane northward to a turning circle / small bus hub near Fen Reeves, synchronising with Community bus services
-------	--

TT/1b	Investigate provision of Community bus services linking Cottenham to e.g. Cambridge North, Ely, Northstowe, Oakington, Rampton and Waterbeach and providing "dial-a-ride" and/or "scheduled feeder" services linking Cottenham edges to the village core.
-------	---

c) Improving cycle links

TC/1	Introduce a long-term cycleway project to improve connections with neighbouring villages, especially Landbeach and Oakington.
------	---

d) Improving our road infrastructure

TR/1	Introduce a long-term carriageway project to improve the quality of roads within the village.
------	---



3 Changing the character and speed of traffic throughout the village

TS/1	Encourage safer entry to and departure from the village by introducing calming measures on each arterial approach road.
-------------	--

- 3.1 Some progress in 2018 and 2019
 - a) Beach Road improvements achieved in 2018.
 - b) Histon Road scheme anticipated in 2019.

TS/2	Improve the speed resistance of the traffic-calming measures along the arterial roads and the High Street, especially in the village centre.
-------------	---

- 3.2 Some elements of Histon Road scheme may be appropriate.



4 Improving pedestrian safety

TP/1	Introduce a medium-term pavement improvement project throughout the village centre.
-------------	--

4.1 Some improvements achieved in 2018 but projects are expensive and take a long time to develop.

TP/2	Introduce a long-term pavement improvement project to improve connection with the village core: a) from Brenda Gautrey Way, Coolidge Gardens, Lambs Lane and Stevens Close, and b) within 800 metres of the centre along all five arterial roads
-------------	---

4.1 Some improvements achieved in 2018 but projects are expensive and take a long time to develop.

TP/3	Introduce additional or improved pedestrian crossings, no further apart than 400 metres, and 200 metres within the village core.
-------------	---

4.1 Some improvements achieved in 2018.



Cottenham Neighbourhood Development Plan
Submission Plan – NP Evidence Paper E13



5 Improving public transport links, especially with Cambridge

TT/1a	Encourage Stagecoach services to avoid unclassified roads in the village and extend the service beyond Lambs Lane northward to a turning circle / small bus hub near Fen Reeves, synchronising with Community bus services
--------------	---

5.1 This may become feasible once the Community Transport Service becomes operational to provide cover for a modified routing.

TT/1b	Investigate provision of Community bus services linking Cottenham to e.g. Cambridge North, Ely, Northstowe, Oakington, Rampton and Waterbeach and providing "dial-a-ride" and/or "scheduled feeder" services linking Cottenham edges to the village core.
--------------	--

5.2 See separate Evidence Paper E14.



6 Improving cycle links

TC/1	Introduce a long-term cycleway project to improve connections with neighbouring villages, especially Landbeach and Oakington.
-------------	--

- 6.1 The cyclepath link with Histon exists with solar-powered guide-lighting but is poorly-maintained, despite Sustainable Cottenham’s efforts to keep the lights clear.
- 6.2 The link with Rampton also exists and has recently been equipped with solar-powered guide lighting jointly funded by Cottenham and Rampton Parish Councils and the A14 Community Fund.
- 6.3 There is no cycle path link with Oakington (and the Guided Busway) although this is a possible Greater Cambridge Partnership project.
- 6.4 There is no cycle path link with Landbeach (and on to Waterbeach Railway Station) although this is a possible s106 project related to the Waterbeach development project.



**Cottenham Neighbourhood Development Plan
Submission Plan – NP Evidence Paper E13**



7 Improving our road infrastructure

TR/1	Introduce a long-term carriageway project to improve the quality of roads within the village.
------	---

Appendix A: General References

Reference	Paper
B1	Cottenham Neighbourhood Plan Survey – Final Report (NPS)
B2	Cottenham draft Pre-submission Neighbourhood Plan v2.1
B3	Cottenham draft Pre-submission Neighbourhood Plan v3.1
B4	AECOM Housing Needs assessment
B5	AECOM Site assessment
B6	AECOM Heritage & Character assessment
B7	Evidence Paper E1 Housing need and supply
B8	Evidence Paper E2 Brownfield sites
B9	Evidence Paper E3 Rural Exception Sites and Community Land Trust
B10	Evidence Paper E4 Recreation Ground
B11	Evidence Paper E5 Village Hall
B12	Evidence Paper E6 Nursery
B13	Evidence Paper E7 Medical and Drop-in & Chat Centre
B14	Evidence Paper E8 Village heritage and character
B15	Evidence Paper E9 NP Golden thread
B16	Evidence Paper E10 Burial ground extensions
B17	Evidence Paper E11 Drainage & Flooding
B18	Evidence Paper E12 Village Design Statement 2007
B19	Evidence Paper E13 Traffic & Transport Strategy
B20	Evidence paper E14: Community Transport
B21	Evidence paper E15: Play
B22	Evidence Paper E16: Open Space
B23	Cottenham draft Pre-submission Neighbourhood Plan v4.2
B24	Strategic Environment Screening Opinion
B25	Consultation statement
B26	Cottenham draft Pre-submission Neighbourhood Plan v5
B27	Strategic Environment Assessment
B28	Basic Conditions Statement